

**DO NOT  
DISCARD**

**HEATMASTER®  
18" Log Placement Instructions**

Black Mountain Maple  
Rocky Mountain Maple



**NOTICE**

Leave these instructions with the manual accompanying the burner system for future reference.

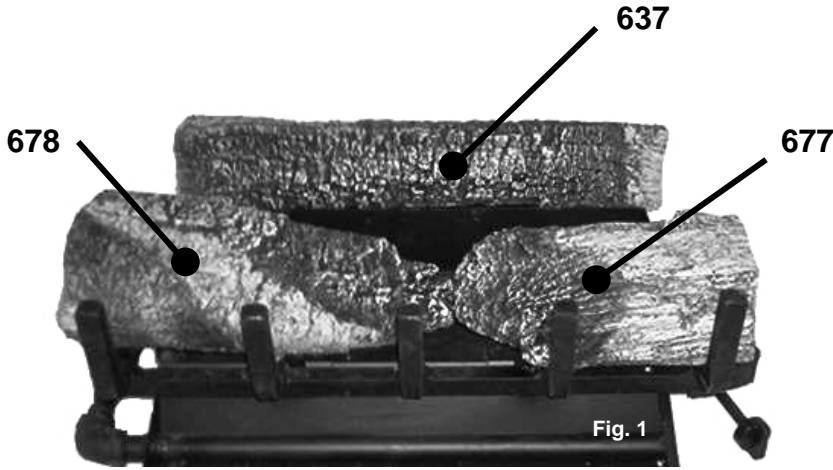


Fig. 1

**Follow these steps for proper installation.**

- ◆ Read and understand the Installation and Operating Instruction Manual accompanying the burner system.
- ◆ Place rear log before installing media. (Sand, Vermiculite, Embers etc.)
- ◆ Install media in the pans according to the manual accompanying burner system.
- ◆ Place logs as shown in Figure 1.
- ◆ Place logs as shown in Figure 3.
- ◆ Find the point where the flame passes through the knot hole in log # 1 (Fig. 2).
- ◆ Use the embers to disperse the flame in and around the log.

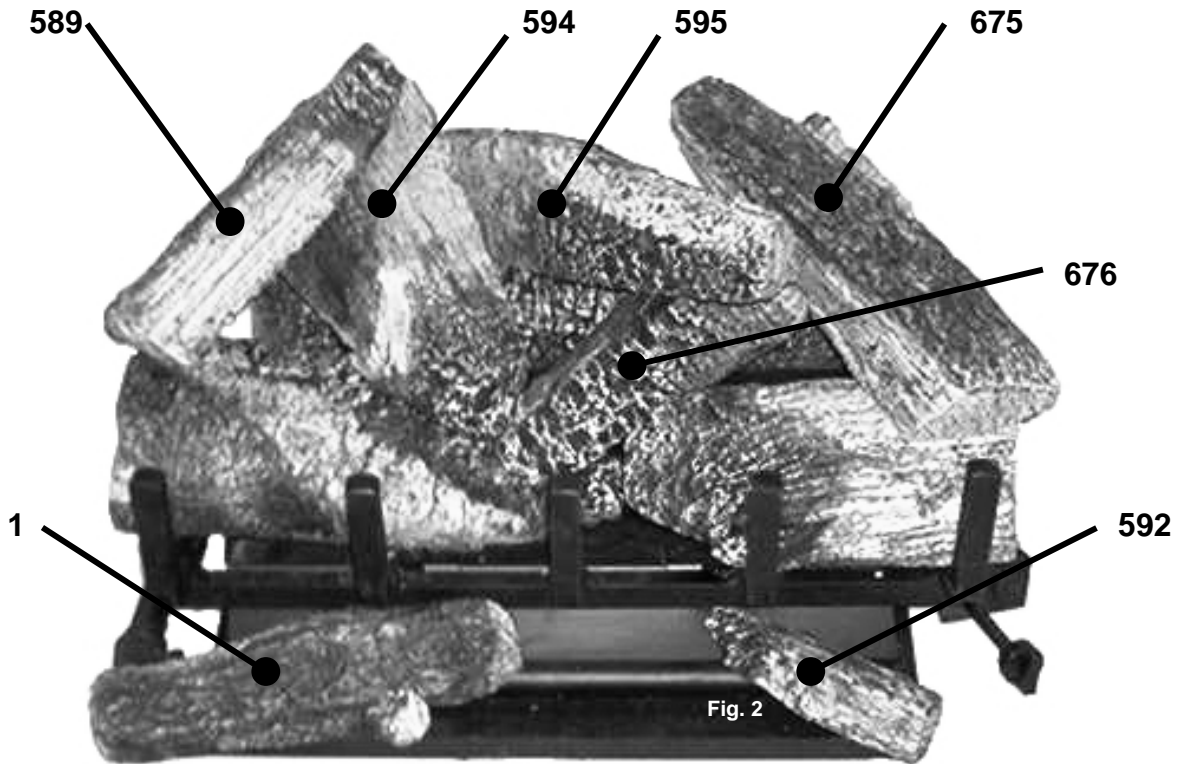


Fig. 2

**WARNING: FAILURE TO POSITION THE PARTS IN ACCORDANCE WITH THESE INSTRUCTIONS OR FAILURE TO USE ONLY PARTS SPECIFICALLY APPROVED WITH THIS APPLIANCE MAY RESULT IN PROPERTY DAMAGE OR PERSONAL INJURY.**