

**DO NOT
DISCARD**

HEATMASTER® 24" Log Placement Instructions

Aspen White Birch
Savannah River Birch



NOTICE

Leave these instructions with the manual accompanying the burner system for future reference.

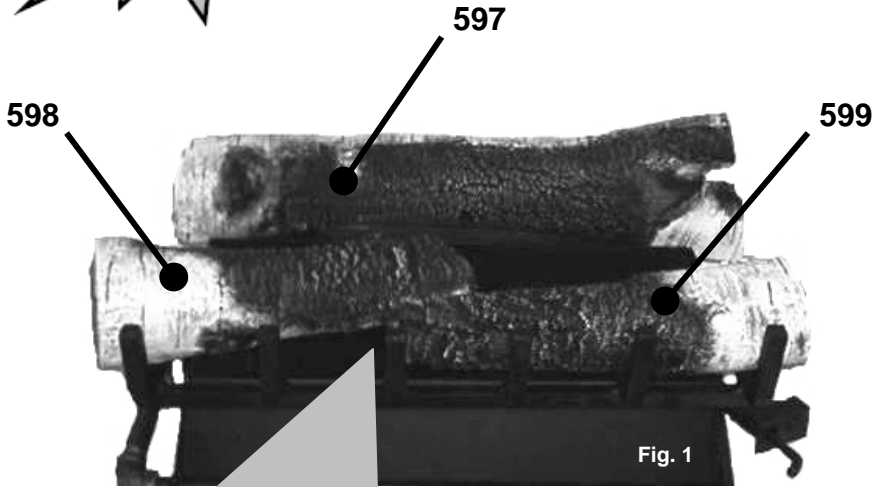


Fig. 1

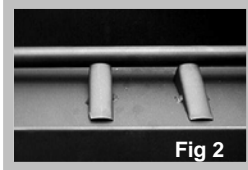


Fig 2

Follow these steps for proper installation.

- ◆ Read and understand the Installation and Operating Instruction Manual accompanying the burner system.
- ◆ Place rear log before installing media. (Sand, Vermiculite, Embers etc.)
- ◆ Install media in the pans according to the manual accompanying burner system.
- ◆ Keep Ember Enhancer tips (Fig. 2) clear of sand (for nat. gas) or Vermiculite (for LP gas).
- ◆ Place logs as shown in Figure 1.
- ◆ Use the rock wool embers to disperse flames coming from the enhancer tips between the front logs.
- ◆ Place logs as shown in Figure 3.



Fig. 3

WARNING: FAILURE TO POSITION THE PARTS IN ACCORDANCE WITH THESE INSTRUCTIONS OR FAILURE TO USE ONLY PARTS SPECIFICALLY APPROVED WITH THIS APPLIANCE MAY RESULT IN PROPERTY DAMAGE OR PERSONAL INJURY.