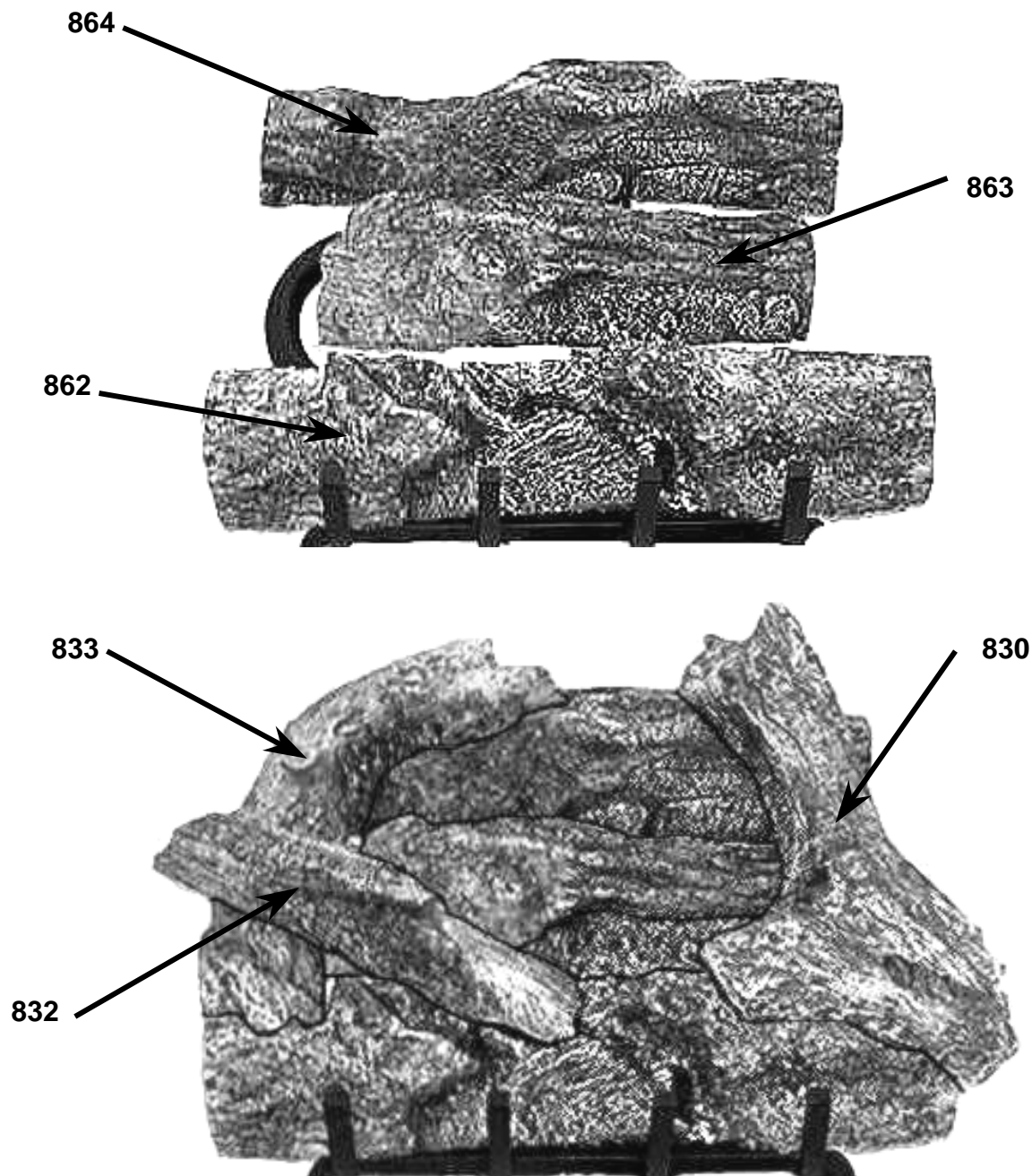


HEATMASTER®
18" Charred Rustic Oak Log Placement Instructions
FOR HM2 SERIES BURNER ONLY



WARNING: It is imperative that the flame does not come into contact with the logs. Some adjustment with the logs in the notches may be required in order to ensure that there is no impingement. It is the installers' responsibility to ensure proper log placement and adjustment.

WARNING: Failure to position the parts in accordance with these diagrams or failure to use only parts specifically approved with this appliance will result in property damage or personal injury.

18" Charred Rustic Oak Log Part Numbers



862



863



864



833



830



832

24" Charred Rustic Oak Log Part Numbers



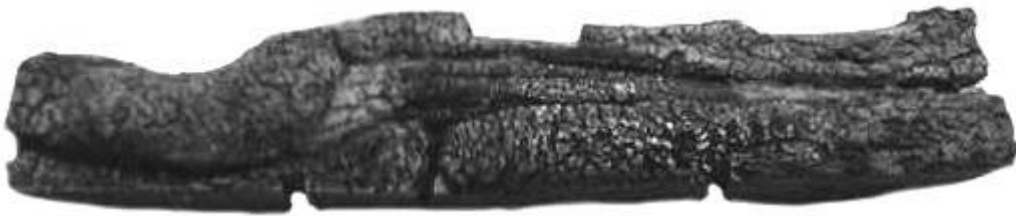
837



836



835



834



833



831

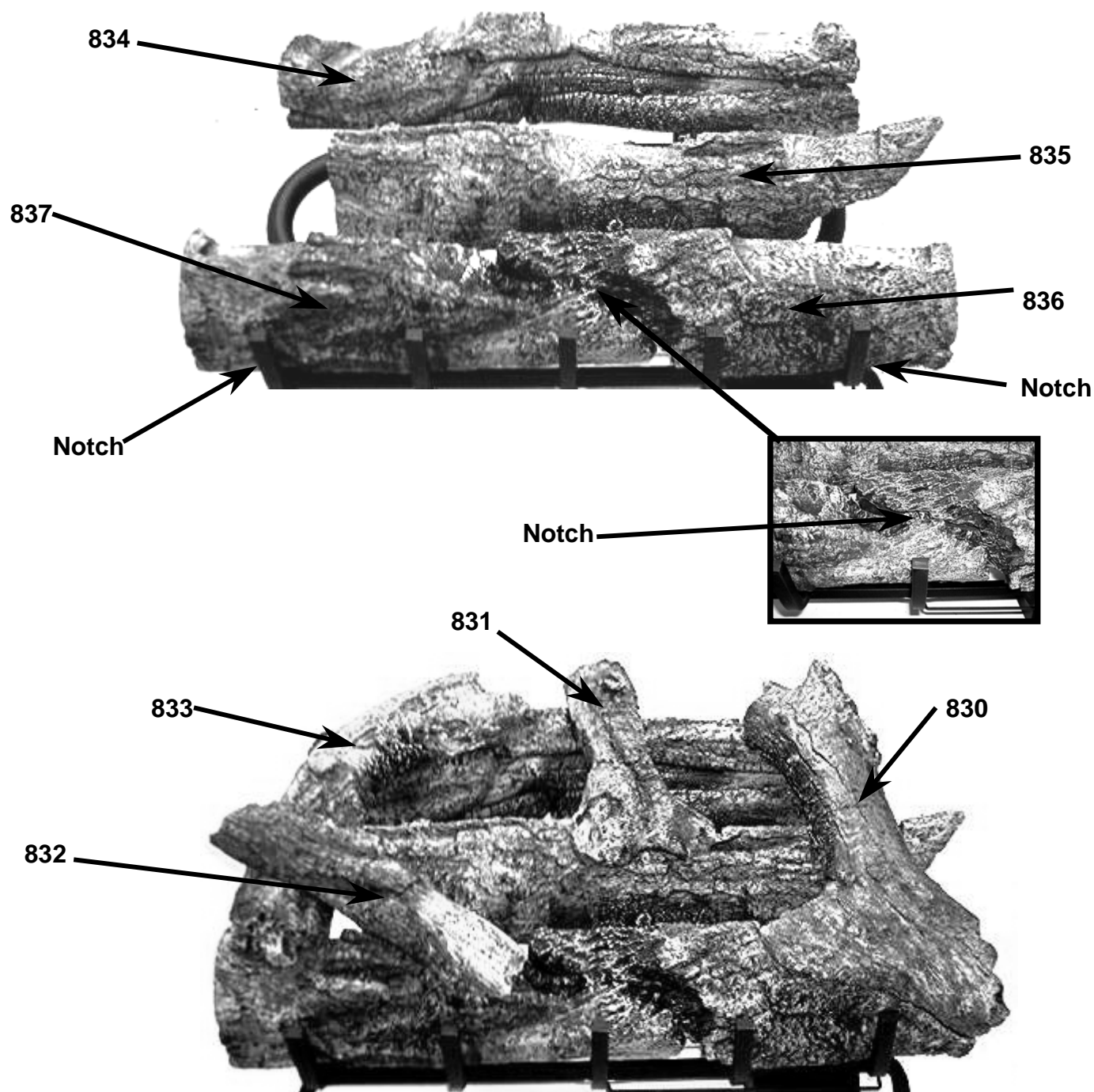


832



830

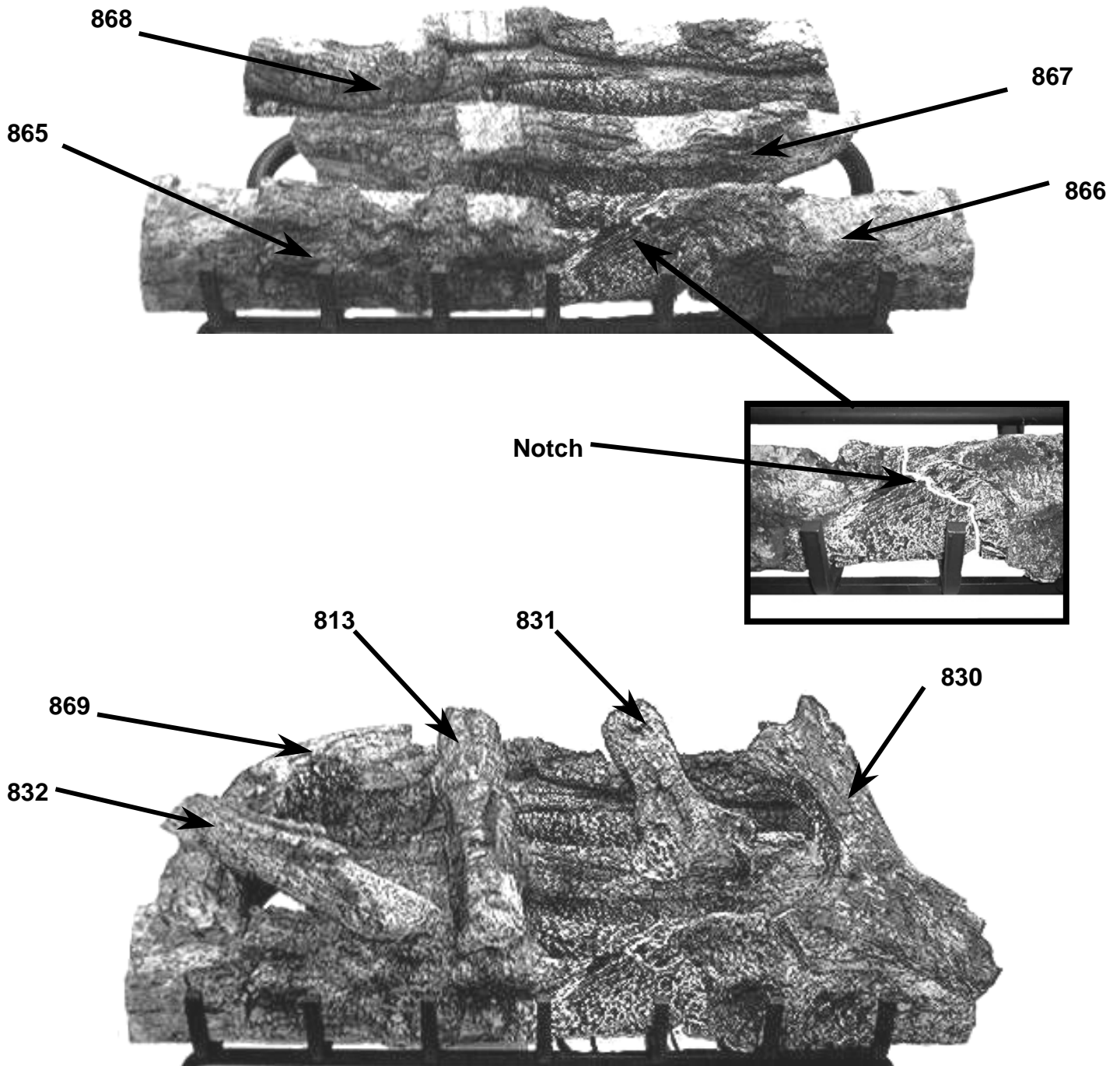
HEATMASTER®
24" Charred Rustic Oak Log Placement Instructions
FOR HM2 SERIES BURNER ONLY



WARNING: It is imperative that the flame does not come into contact with the logs. Some adjustment with the logs in the notches may be required in order to ensure that there is no impingement. It is the installers' responsibility to ensure proper log placement and adjustment.

WARNING: Failure to position the parts in accordance with these diagrams or failure to use only parts specifically approved with this appliance will result in property damage or personal injury.

HEATMASTER®
30" Charred Rustic Oak Log Placement Instructions
FOR HM2 SERIES BURNER ONLY



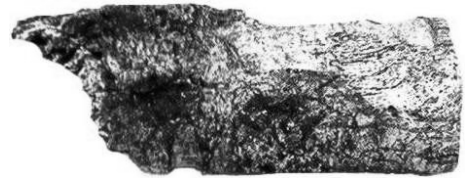
WARNING: It is imperative that the flame does not come into contact with the logs. Some adjustment with the logs in the notches may be required in order to ensure that there is no impingement. It is the installers' responsibility to ensure proper log placement and adjustment.

WARNING: Failure to position the parts in accordance with these diagrams or failure to use only parts specifically approved with this appliance will result in property damage or personal injury.

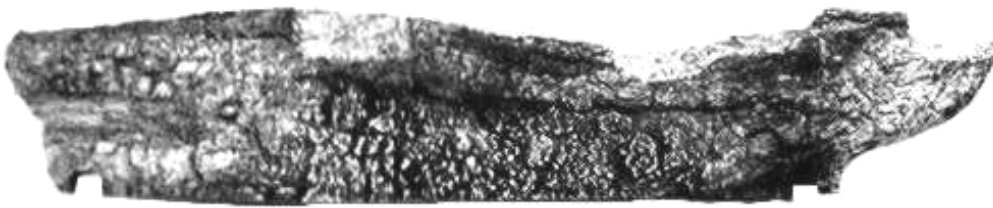
30" Charred Rustic Oak Log Part Numbers



865



866



867



868



869



831



813



832



830